

**uThukela District Presentation  
Quarter 4 2014/2015  
to the KZN PCA meeting  
11/03/2015**

Presented by Cllr DCP Mazibuko

Mayor of uThukela District Municipality & Chairperson of  
DAC at uThukela District Municipality

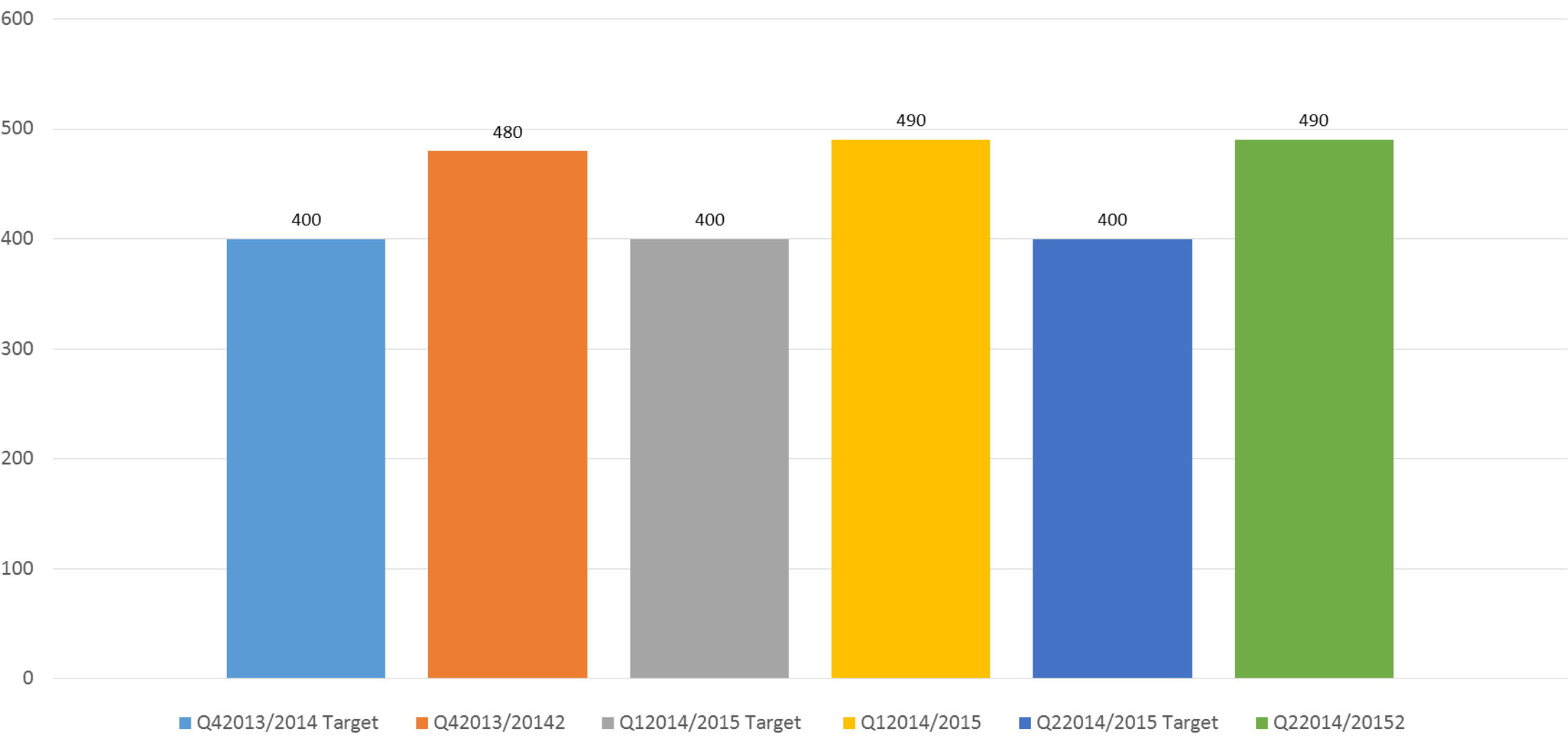
## Strategic Objective 1

### Addressing Social & Structural Drivers of HIV & AIDS, STIs & TB Prevention Care and Impact

Intervention Area: Orphans and Vulnerable Children

Indicator	Quarter 1 2014/15 Target	Data for Quarter 1 2014/15	Quarter 1 2014/15 Target	Data for Quarter 2 2014/15	Quarter 2 2014/15 Target	Data for Quarter3 2014/15
Number of newly registered OVC	848 (An)	91	848(An)	1103	848(An)	4367

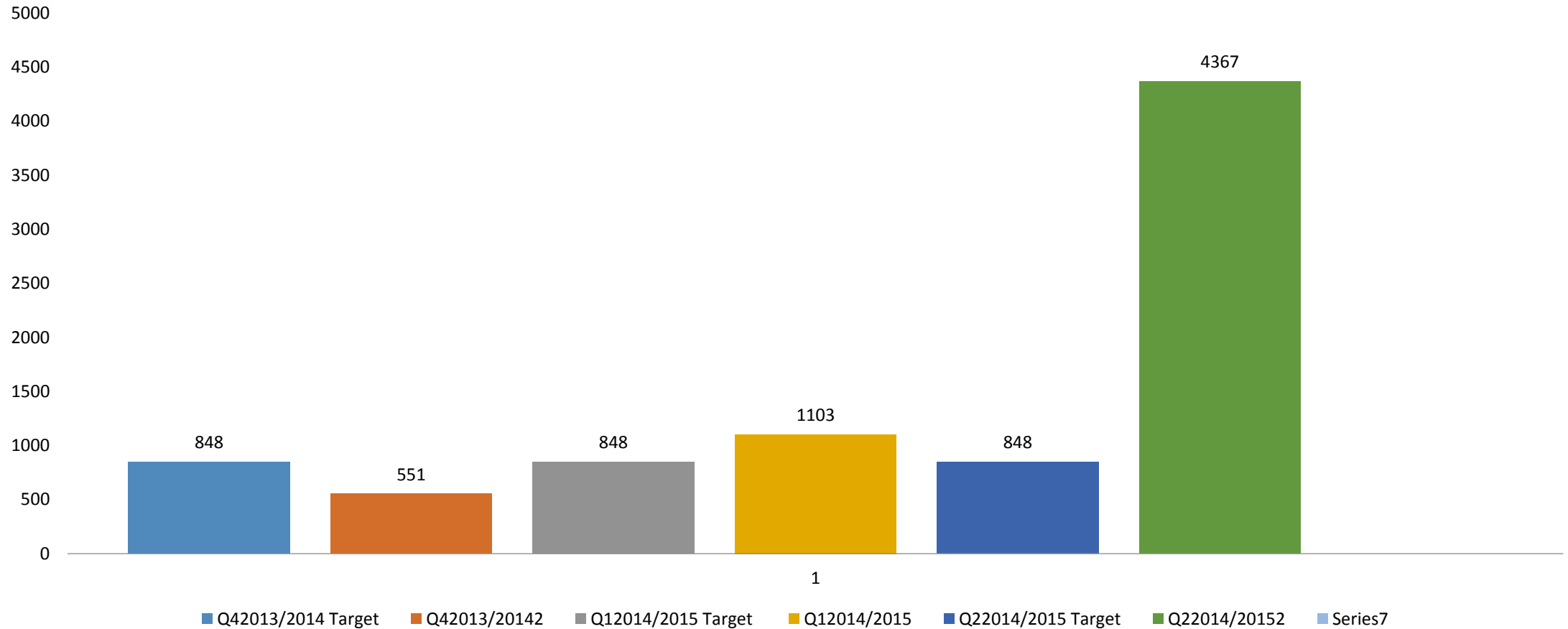
Intervention Area: Orphans and Vulnerable Children – (Graph format example)



## Intervention Area: Orphans and Vulnerable Children

<b>Indicator</b>	<b>Quarter 1 2014/15 Target</b>	<b>Data for Quarter 1 2014/15</b>	<b>Quarter 2 2014/15 Target</b>	<b>Data for Quarter 2 2014/15</b>	<b>Quarter 3 2014/15 Target</b>	<b>Data for Quarter 3 2014/15</b>
<b>Number of registered OVC receiving care and support</b>	848(An)	551	848(An)	1103	848(An)	5704

# Number of registered OVC receiving care and support



## Activities/Interventions moving forward

- Provision of food (food parcels , 2 nutritious cooked meals 5 days a week)
- School attendance support- Child minders and child and youth care workers assist OVS with their homework. OVCs received school uniforms through community care centres funded by DSD
- Laundry services provided to OVCs by Community Care Centres
- UThukela DSD is training 176 Child and Youth workers to render services to OVCs through the Isibindi programme

# Intervention Plan for OVC programme

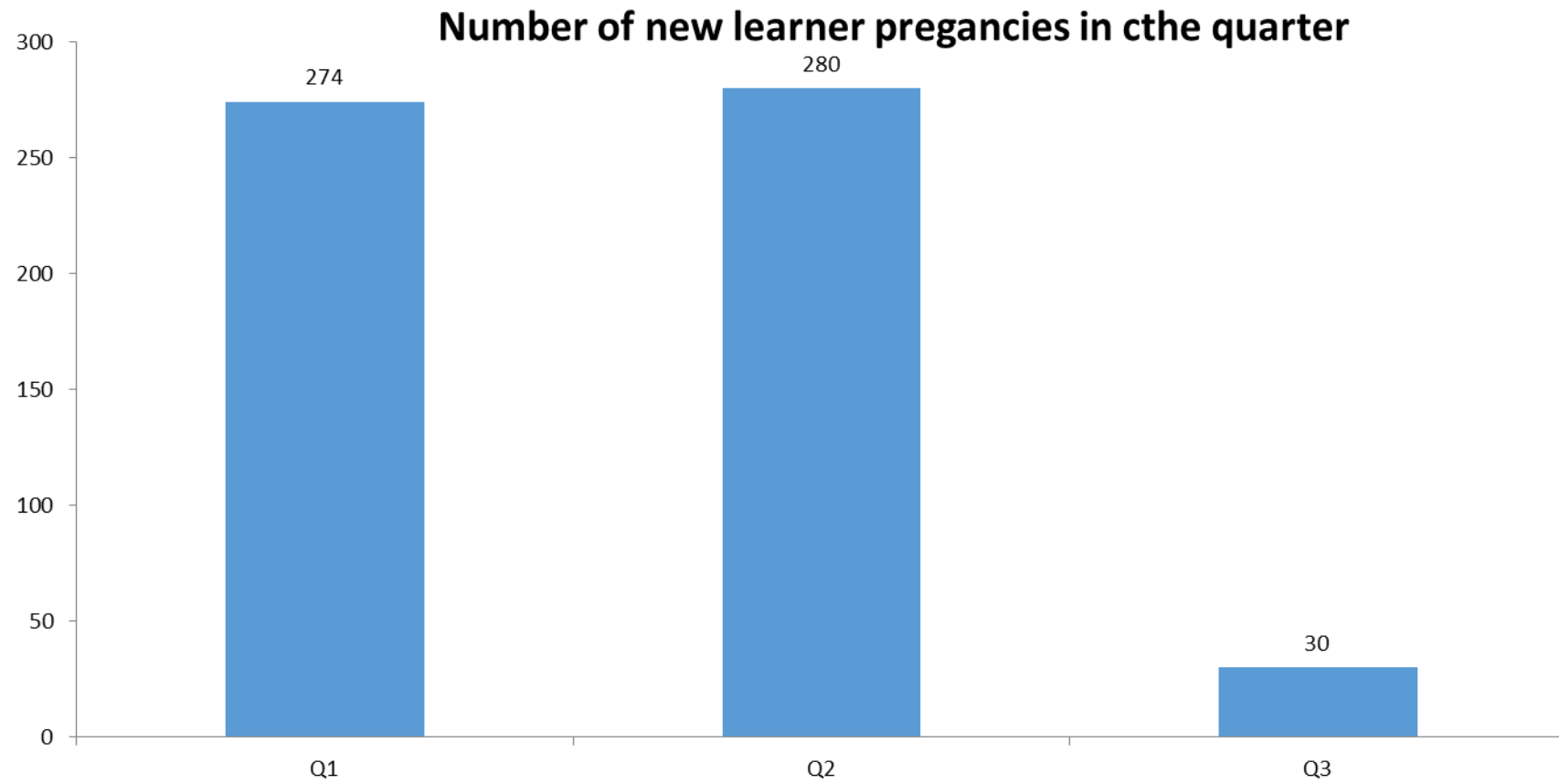
Activity	Time frame	Budget
School attendance support	5 days a week	Funding of 14 community care centres under uThukela by DSD = 8.5 million
Laundry services	5 days a week	
Provision of food ( meals and food parcels)	Once a month for food parcels, 2 meals 5 days a week	
School holiday programme	Every school holiday	
Child protection programme	Every school holidays	
Girl child programme	Daily	
Isibindi programme-Child and Youth care workers in training for 18 months	on-going	Child and Youth Care workers receive a stipend of R1600 per month and the programme is inline with the NYS

## Intervention Area: Life skills

<b>Indicator</b>	<b>Quarter 1 2014/15 Target</b>	<b>Data for Quarter 1 2014/15</b>	<b>Quarter 2 2014/15 Target</b>	<b>Data for Quarter 2 2014/15</b>	<b>Quarter 3 2014/15 Target</b>	<b>Data for Quarter 3 2014/15</b>
Number of new learner pregnancies in the quarter	0	274	0	280	0	30



# Life skills



# Activities/Interventions moving forward

Ukuthwalwa kwamantombazane at Emhlwazini High school ( Okhahlamba Local Municipality) contributed to high teenage pregnancy

- Strengthening of Zazi campaigns and mobilization of Political Leadership assisted in overcoming high teenage pregnancy
- The school had zero teenage pregnancy in the year 2013/14

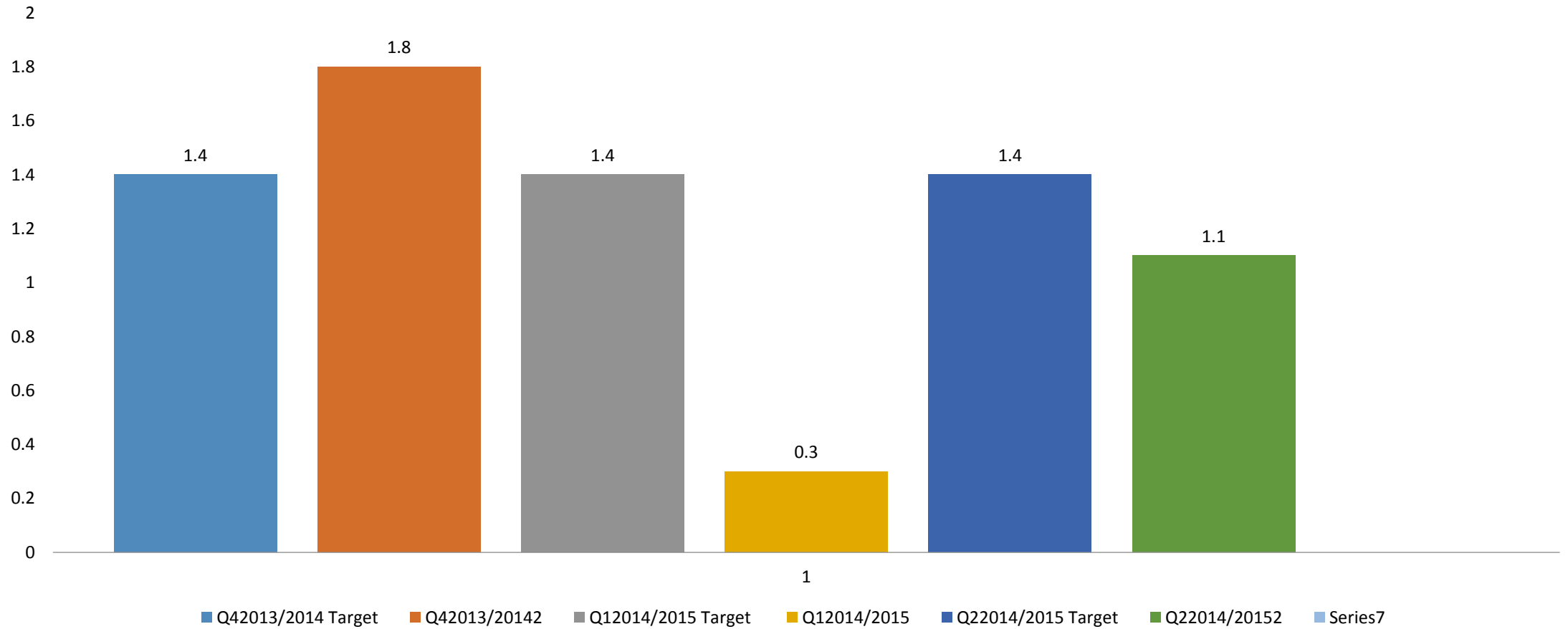
## **Interventions**

- To rollout at other local municipalities
- Strengthen stakeholder engagement in moral regeneration projects impacted positively( reduction of teenage pregnancies) at Amahlubi , Ngibongeleni and Khandimfudo High schools
- Dialogues targeting schools focusing on substance abuse, OVC management party political alignment
- Umtshezi LM in conjunction with Pietermaritzburg United FC initiated learn and play in schools
- Learners given birth control options.
- M & E on access to birth control measures, TOP <18 years

## Intervention Area: PMTCT

<b>Indicator</b>	<b>Quarter 1 2014/15Target</b>	<b>Data for Quarter 1 2013/14</b>	<b>Quarter 1 2014/15 Target</b>	<b>Data for Quarter 2 2014/15</b>	<b>Quarter 3 2014/15 Target</b>	<b>Data for Quarter 3 2014/15</b>
Baby PCR tested positive around 6 weeks rate	1,4%	1.8%	1.4%	0.3%	1.4%	1.10%

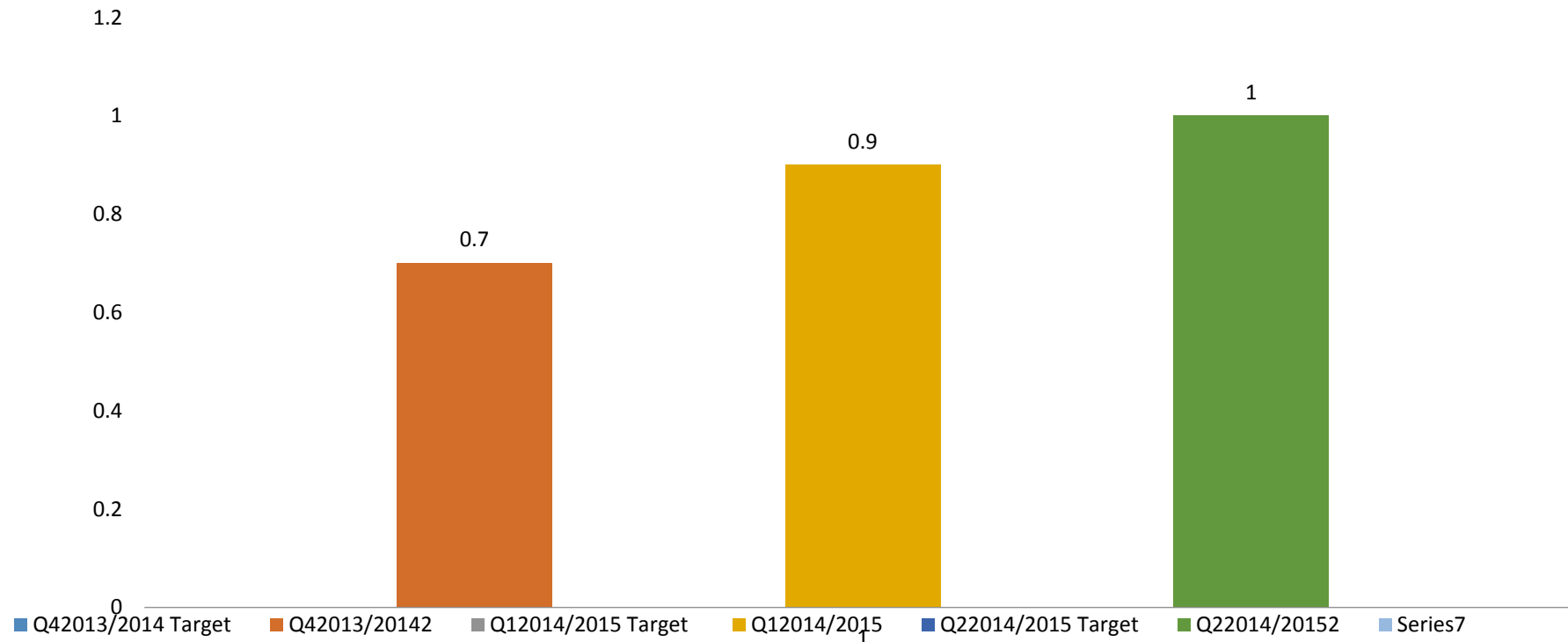
# PCR Positivity rate



## Intervention Area: PMTCT

<b>Indicator</b>	<b>Quarter 1 2014/15 Target</b>	<b>Data for Quarter 1 2014/15</b>	<b>Quarter 1 2014/15 Target</b>	<b>Data for Quarter 2 2014/15</b>	<b>Quarter 2 2014/15 Target</b>	<b>Data for Quarter 3 2014/15</b>
Baby HIV antibody test positive at 18 months rate	>2.5%	0.7%	>2.5%	0.9%	>2.5	1.00%

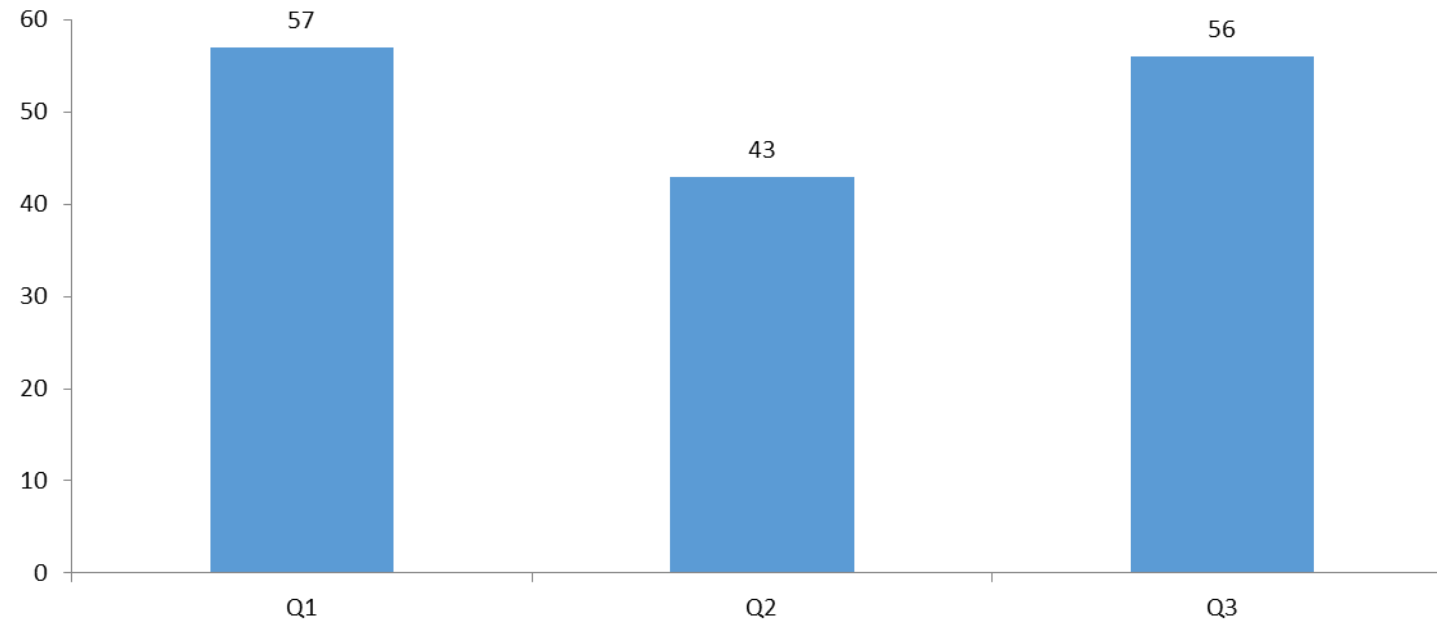
# Baby HIV antibody test at 18 months positive rate



## Intervention Area: PMTCT

<b>Indicator</b>	<b>Quarter 1 2014/15 Target</b>	<b>Data for Quarter 1 2014/15</b>	<b>Quarter2 2014/15 Target</b>	<b>Data for Quarter 2 2014/15</b>	<b>Quarter 3 2014/15 Target</b>	<b>Data for Quarter 3 2014/15</b>
Number of infant deaths in public health facilities		57		43		56

# Number of Infants deaths in public facilities

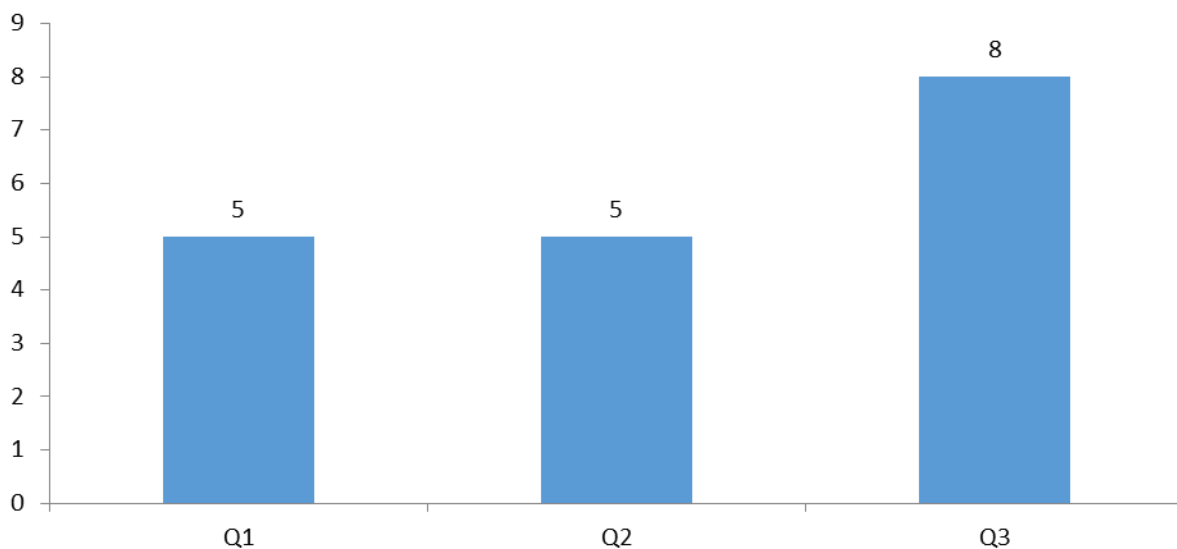




# Intervention Area: PMTCT

Indicator	Quarter 1 2014/15Target	Data for Quarter 1 2014/145	Quarter 2 2014/15 Target	Data for Quarter 2 2014/15	Quarter 3 2014/15 Target	Data for Quarter 3 2014/15
Number of maternal deaths in public health facilities		5		5		8

# Number of Maternal deaths in public health facilities



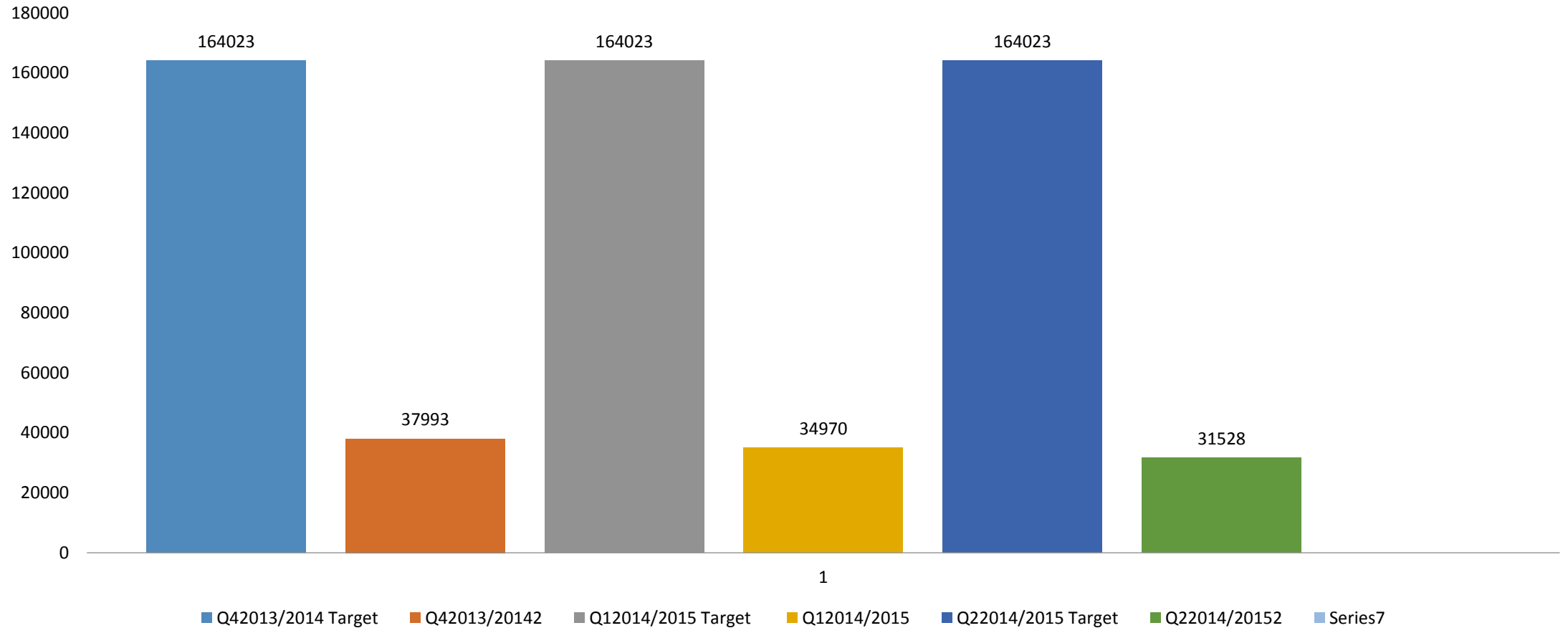
# Activities/Interventions moving forward

- Implementation of preventative majors i.e. early initiation to Hiv positive women
- Follow up of all women who tested HIV negative every three for retesting
- Monitoring of viral loads in positive breastfeeding women
- Scaling of training of all midwives on management of obstetric emergencies
- Sensitive community on the importance of early ANC booking

## Intervention Area: HCT & TB screening

<b>Indicator</b>	<b>Quarter 4 2013/14 Target</b>	<b>Data for Quarter 4 2013/14</b>	<b>Quarter 1 2014/15 Target</b>	<b>Data for Quarter 1 2014/15</b>	<b>Quarter 2 2014/15 Target</b>	<b>Data for Quarter 2 2014/15</b>
Number of HIV tests conducted	164023	37993	164023	34970	164023	31528

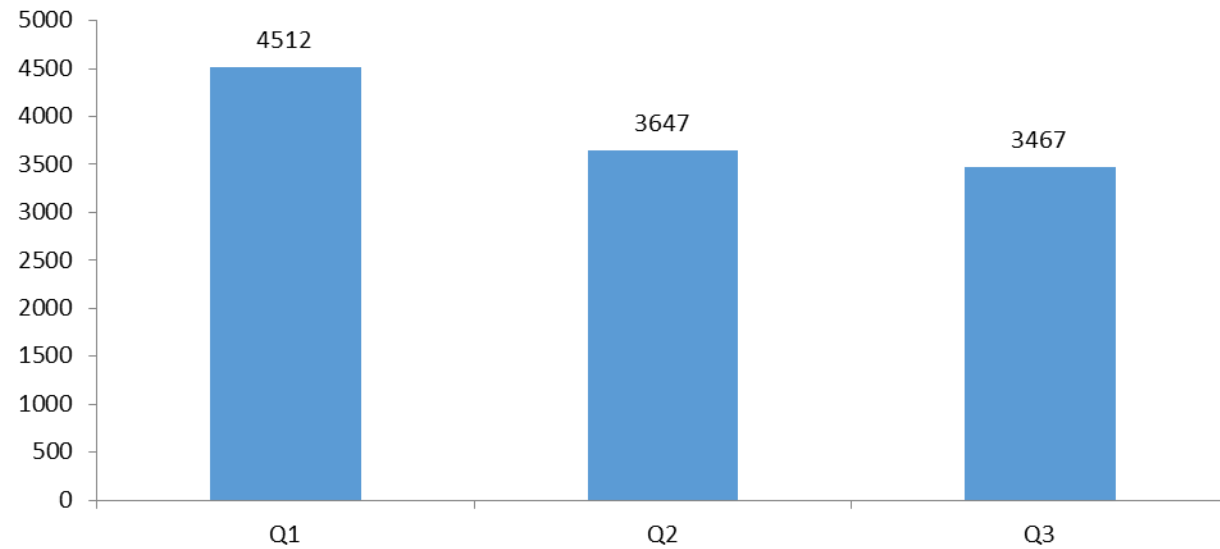
# HCT : Number of HIV tests conducted



## Intervention Area: HCT & TB screening

Indicator	Quarter 1 2014/15Target	Data for Quarter 1 2014/15	Quarter 2 2014/15 Target	Data for Quarter 2 2014/15	Quarter 3 2014/15 Target	Data for Quarter 3 2014/15
Number of positive cases	30%	4512	30%	3647	30%	3467

# Number of cases positive



# Intervention Area: Condoms distribution

Indicator	Quarter 1 2014/15 Target	Data for Quarter 1 2014/15	Quarter 2 2014/15 Target	Data for Quarter 2 2014/15	Quarter 3 2014/15 Target	Data for Quarter 3 2014/15
Number of male condoms distributed	13403444	3921329	13403444	4201349	13403444	2040971



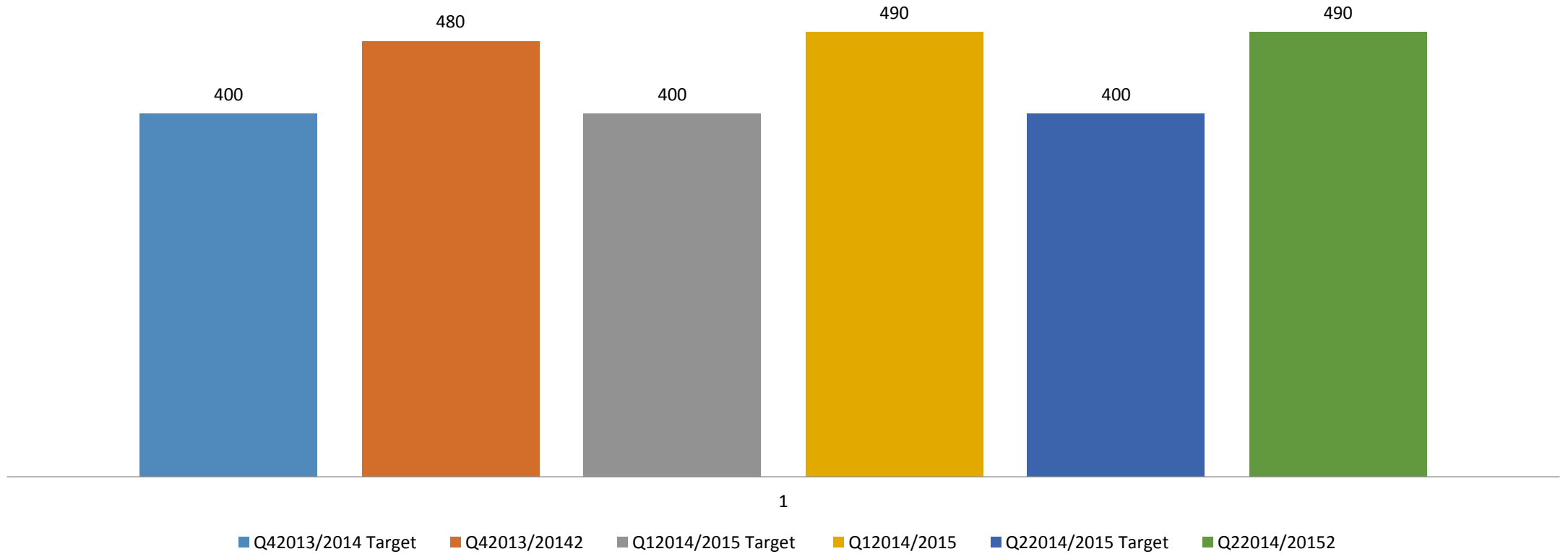
# Intervention Area: Condoms distribution

Indicator	Quarter 1 2014/15 Target	Data for Quarter 1 2014/15	Quarter 2 2014/15 Target	Data for Quarter 2 2014/15	Quarter 3 2014/15 Target	Data for Quarter 3 2014/15
Number of female condoms distributed	222489	30016	222489	59660	222489	49308

## Intervention Area: Condoms distribution ( No graph needed)

<b>Indicator</b>	<b>Quarter 1 2014/15 Target</b>	<b>Data for Quarter 1 2014/15</b>	<b>Quarter 2 2014/15 Target</b>	<b>Data for Quarter 2 2014/15</b>	<b>Quarter 3 2014/15 Target</b>	<b>Data for Quarter 3 2014/15</b>
Number of secondary distribution sites	400	480	400	490	400	490

# Secondary condom distribution sites



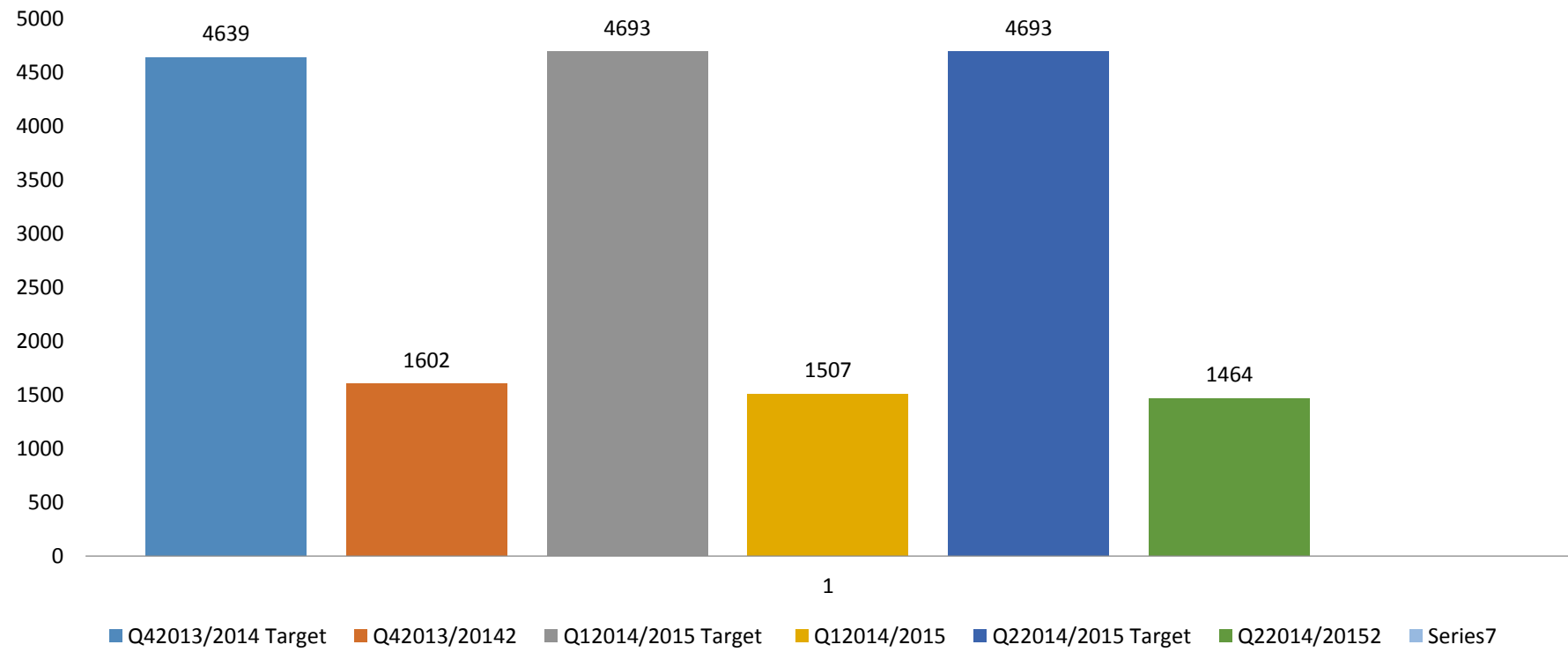
# Activities/Interventions moving forward

- Strengthen Provider Initiated Counselling and Testing (PICT) implementation at facilities
- Utilising resources from NGOs partners.
- CCGs to conduct door to door campaigns and condom blitz in hot spots.
- Involvement of political /community leadership from Ward level upwards
- Health Systems Trust( HST) to coordinate outreach data collection and reporting
- DAC Deputy Chairperson to coordinate collection and reporting of data from all NGOs/NPOs
- Strengthening interventions for cooperative governance in conducting outreach events e.g. Truckers wellness programme

## Intervention Area: Male Medical Circumcision

<b>Indicator</b>	<b>Quarter 1 2014/15 Target</b>	<b>Data for Quarter 1 2014/15</b>	<b>Quarter 2 2014/15 Target</b>	<b>Data for Quarter 2 2014/15</b>	<b>Quarter 3 2014/15 Target</b>	<b>Data for Quarter 3 2014/15</b>
Number of males aged 15 – 49 circumcised	4693	1602	4693	1507	4693	1464

# MMC



# Activities/Interventions moving forward

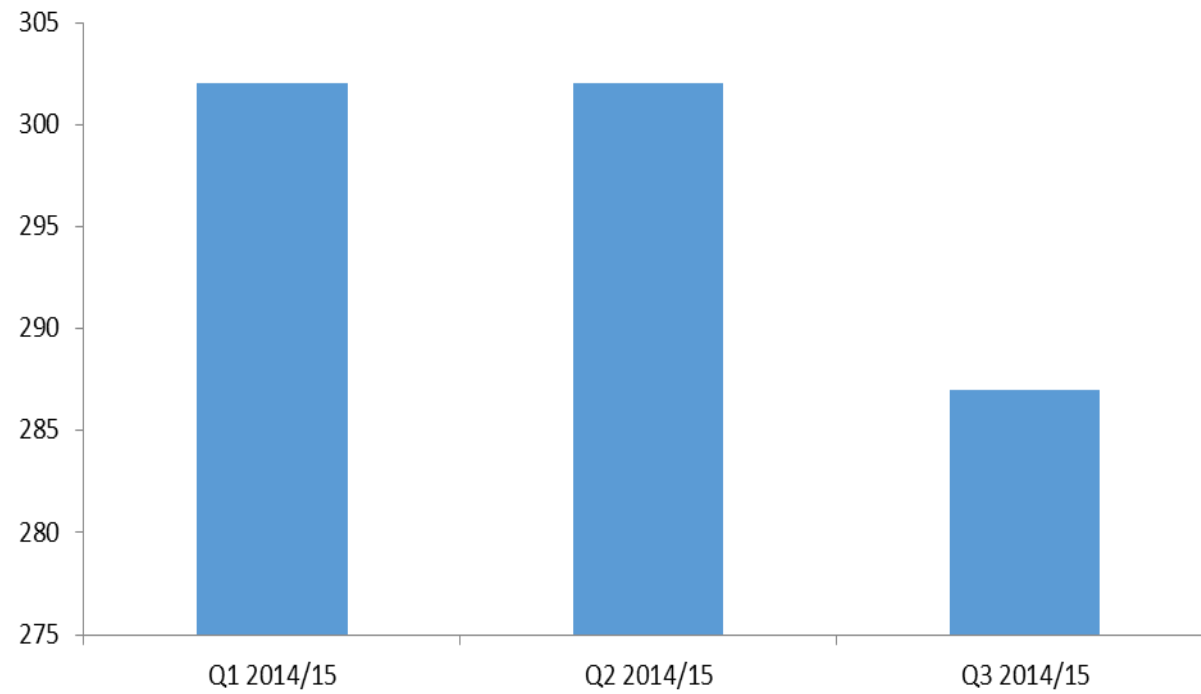
- Conduct community dialogues
- Strengthen supervision and support of traditional MMC coordinators

Intervention Area: Prevention of Exposure to transmission from occupational exposure, sexual violence

Indicator	Quarter 1 2014/15Target	Data for Quarter 1 2014/15	Quarter 2 2014/15 Target	Data for Quarter 2 2014/15	Quarter 3 2014/15 Target	Data for Quarter 3 2014/15
Number of new sexual assault cases		302		302		287



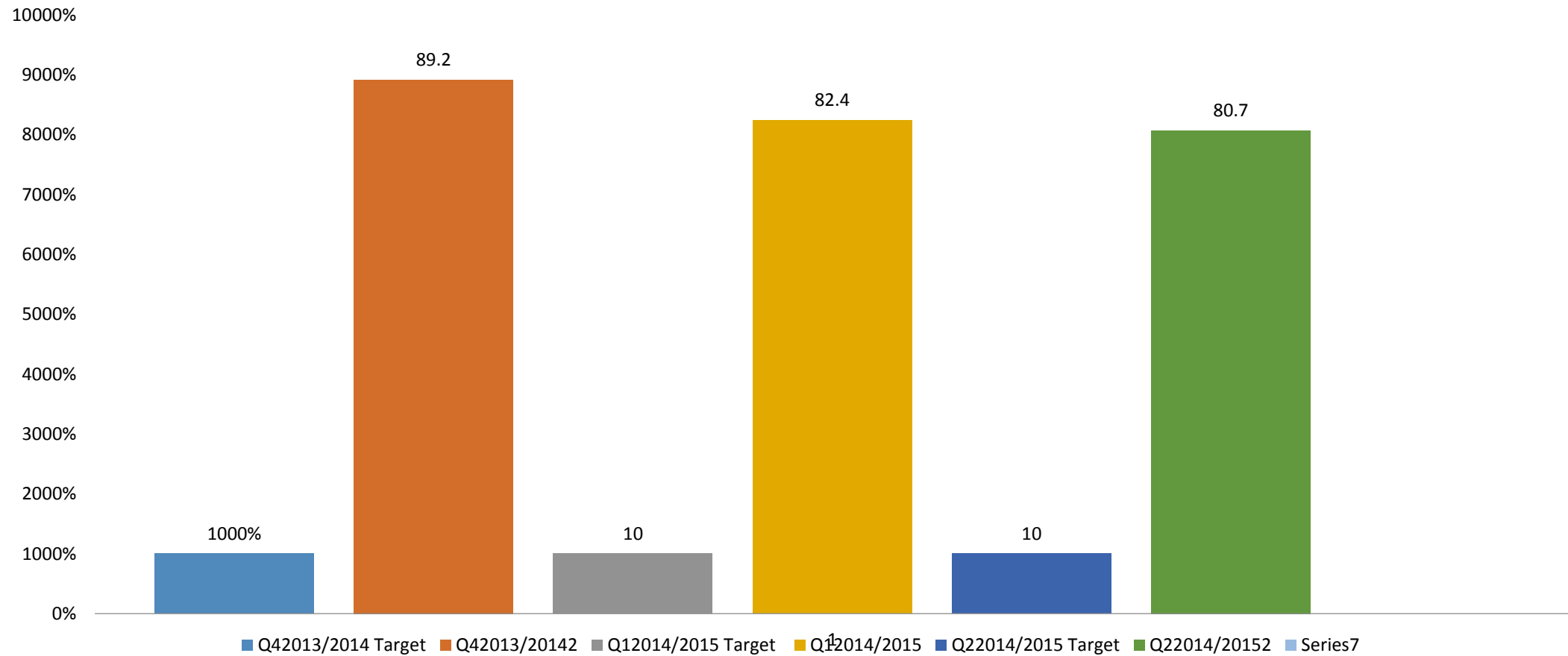
# New sexual assault cases



## Intervention Area: Prevention of Exposure to transmission from occupational exposure, sexual violence

Indicator	Quarter 1	Data for Quarter		Data for Quarter 2		Data for Quarter 3
	2014/15 Target	1 2014/15	Quarter 2 2014/15 Target	2014/15	Quarter 3 2014/15 Target	2014/15
Children under 12 years sexually assaulted rate	10%	89,2%	10%	82.4%	10%	80.7%

# Sexual assault cases < 12years



# Activities/Interventions moving forward including plans to curb sexual crimes as per SAPS Data

- SAPS data accessible as it is regarded as confidential.
- The most vulnerable groups to sexual assaults are : senior citizens ,single parents(women),learners walking long distances home, women in taverns after hours.
- Community dialogues conducted in 3 wards at Imbabazane LM through OSS structures.  
Resolutions taken :
  - ❖ close down taverns next to school
  - ❖ Discourage planting of dagga
  - ❖ Strengthen Peer Education Programme in schools
  - ❖ Mayoral programmes to support learners in school e.g. bursaries

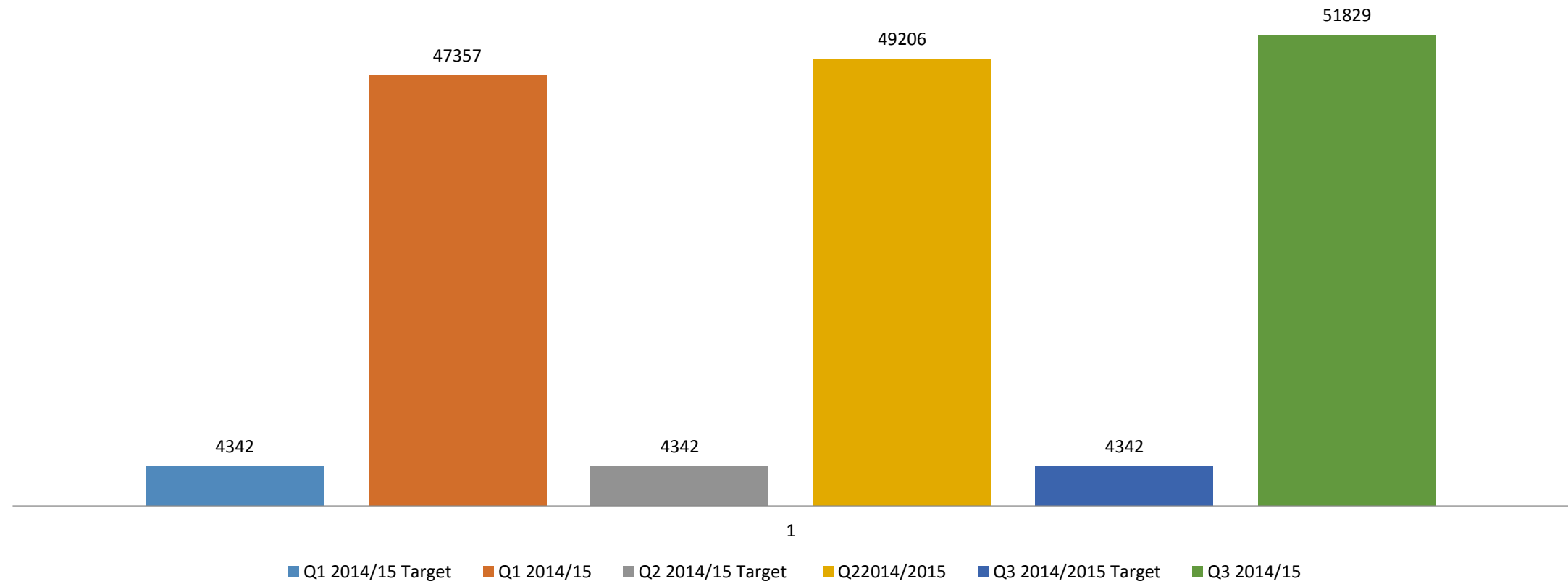
# Plan Continues.....

- A detailed root cause analysis to be conducted by OSS structures
- Intervention will be starting at ward level
- The District plan will be informed by the outcome of the analysis in remaining wards , including youth programme plan

## Intervention Area: Comprehensive ART services

<b>Indicator</b>	<b>Quarter 1 2014/15 Target</b>	<b>Data for Quarter 1 2014/15</b>	<b>Quarter 2 2014/15 Target</b>	<b>Data for Quarter 2 2014/15</b>	<b>Quarter 3 2014/15 Target</b>	<b>Data for Quarter 3 2014/15</b>
Total number of patients on ART	4342	47357	4342	49206	4342	51829

# Total no of Patients on ART

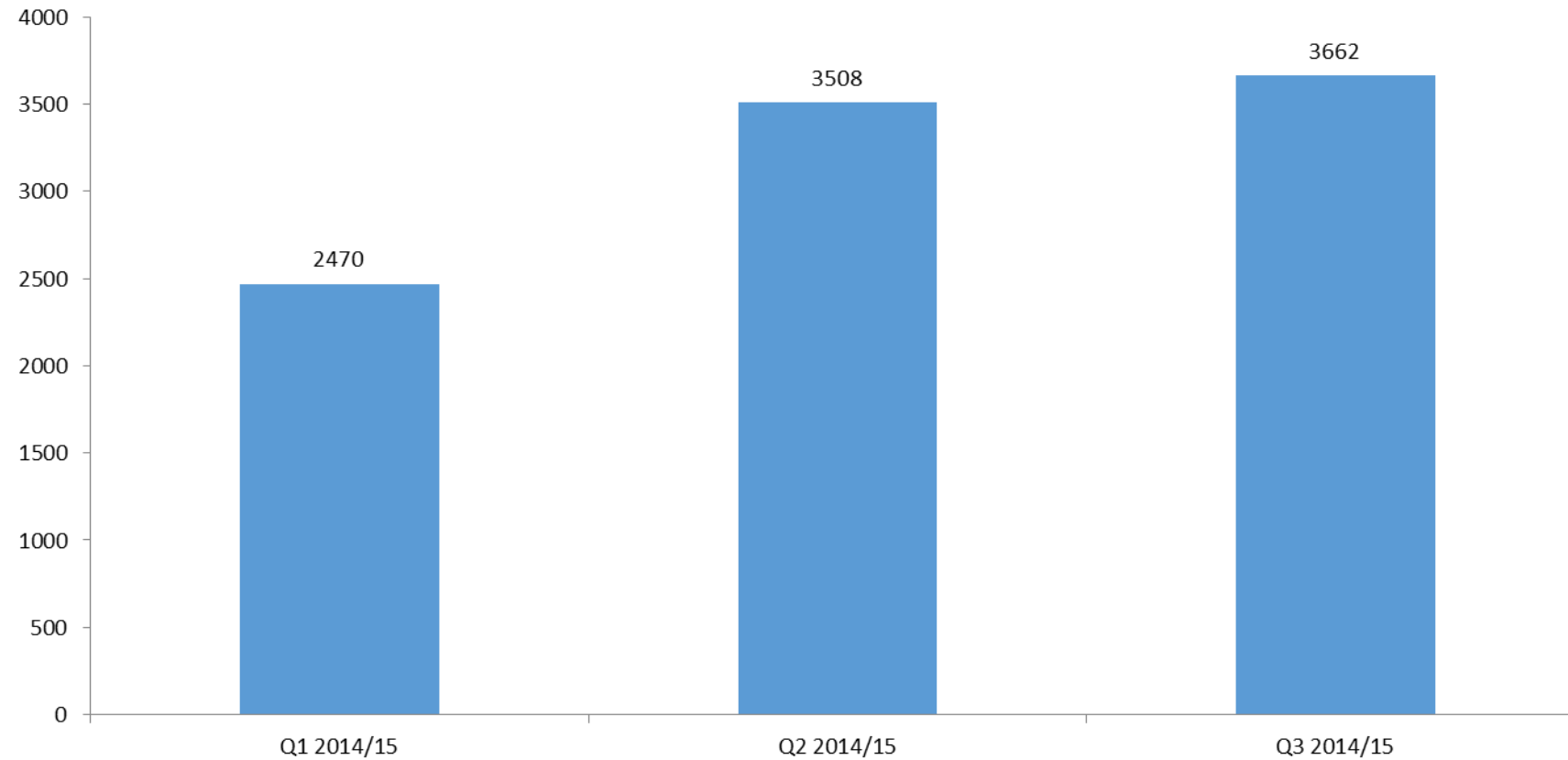


## Intervention Area: Comprehensive ART services

<b>Indicator</b>	<b>Quarter 1 2014/15 Target</b>	<b>Data for Quarter 1 2014/15</b>	<b>Quarter 2 2014/15 Target</b>	<b>Data for Quarter 2 2014/15</b>	<b>Quarter 3 2014/15 Target</b>	<b>Data for Quarter 3 2014/15</b>
Number of ART clients de-registered due to loss to follow up	<10%	2470	<10%	3508	<10%	3662



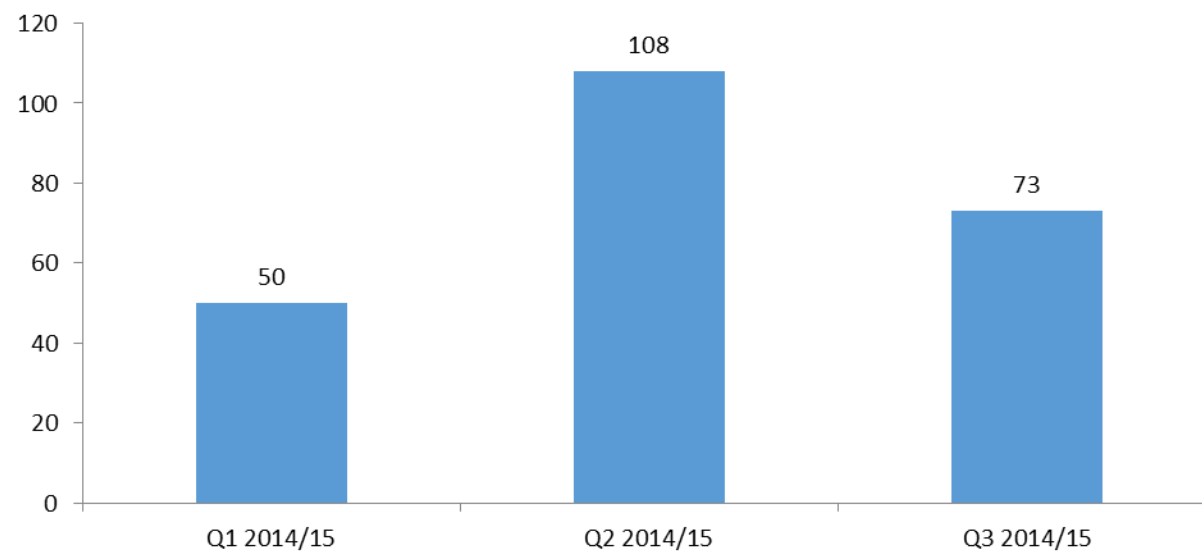
# Patients de registered due to loss to follow up



## Intervention Area: Comprehensive ART services

<b>Indicator</b>	<b>Quarter 1 2014/15 Target</b>	<b>Data for Quarter 1 2014/15</b>	<b>Quarter 2 2014/15 Target</b>	<b>Data for Quarter 2 2014/15</b>	<b>Quarter 3 2014/15 Target</b>	<b>Data for Quarter 3 2014/15</b>
Number of ART patients deregistered due to death	0	50	0	108	0	73

# ART Clients deregistered due to deaths



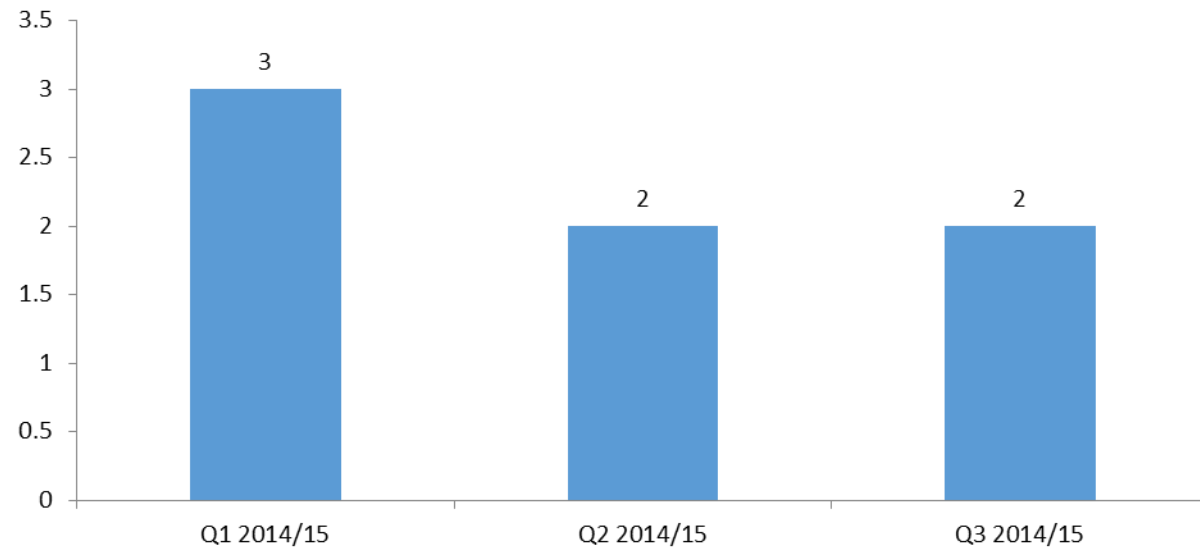
# Activities/Interventions moving forward

- All facilities are initiating ARVs in the district .
- Targets are met for the adults ,with the paediatrics numbers are low
- Positivity rate for the district is low 1,10% which means Elimination of Mother to Child Transmission is successful.
- Lost to follow ups are increasing because of the two facilities not signed off from 3Tier because their data is not accurate.
- Adherence is improving since adherence counselling trainings are on going in the district for all categories,
- facilities are encouraged to print early and late missed appointment reports from 3Tier and give list to CCGs and TB Tracers for tracing of clients.

## Intervention Area: Coordination, Monitoring & Evaluation

<b>Indicator</b>	<b>Quarter 1 2013/14 Target</b>	<b>Data for Quarter 1 2013/14</b>	<b>Quarter 2 2014/15 Target</b>	<b>Data for Quarter 2 2014/15</b>	<b>Quarter 3 2014/15 Target</b>	<b>Data for Quarter 3 2014/15</b>
Number of LACs submitting reports to DAC	5	3	5	2	5	2

# Coordination, Monitoring & Evaluation



# Intervention Area: Coordination, Monitoring & Evaluation

Indicator	Quarter 1 2014/15 Target	Data for Quarter 1 2014/15	Quarter 2 2014/15 Target	Data for Quarter 2 2014/15	Quarter 2 2014/15 Target	Data for Quarter 2 2014/15
Number of WACs submitting reports to LAC	73	0	73	0	73	0

# Activities/Interventions moving forward

- Training conducted at Indaka and Imbabazane LMs and action plan for Imbabazane LM have been developed.
- To conduct training for Okhahlamba LM
- Emnambithi and Umtshezi were trained (2013/14) but M&E has not been done.
- Working closely with Office the Premier in addressing challenges at Umtshezi LM
- Letters forwarded to all Local Municipality Mayors with instruction to convene and chair LAC meetings and also attend DAC meetings with prepared reports.



Achievements for Q3 - 2014

# World AIDS Day Build up events

- Wellness programme at uThukela
- It took place on the 21<sup>st</sup> of November 2014 at UThukela District. Targeted all government employees of UThukela.
- The main objective was to promote healthy lifestyle and wellness of employees.
- Topics covered were : Tobacco and its health effects and mal nutrition in children. See the attached photos:



## MMC AND IMBIZO YAMADODA AT INDAKA

MMC : The sites visited were as follow

Facility Name	Date	No Circumcised
Mteyi Clinic	25/11/2014	: 63
Sgweje Clinic	27/11/2014	32
Mangweni T/C	29/11/2014	29
Sgweje Clinic	04/12/2014	27
Gcinalishona T/C	11/12/2014	19
Other MMC camp were conducted Traditional authorities, Correctional Services		

# Youth Camp

- SOCIO ECONOMIC DEVELOPMENT
- This was brought up for the youth to focus on creating their own basic product which will help them to tap on the markets
- This will help in addressing unemployment and spread of HIV and AIDS and once one becomes self-sufficient vulnerability will be eliminated.
- Our youth should be economically empowered on HIV and AIDS issues without a fail.
- The fundamentals is to have a registered company/business.
- Youth was advised to identify relevant products that are consumed mostly into the communities and start purchasing those product

## WAY FORWARD

- Youth coordinators at local Municipalities to develop a youth programme plan that will inform the District Plan by the 31 March 2015.

## YOUTH CAMP AT UKHAHLAMBA : Theme: The power of decision by Sibusiso Buthelezi form Ukhozi FM



# HCT

## ACHIEVEMENTS:

•On the 28/ 11/ 14 at the Macksons Taxi Rank – 3 Families were food parcels beneficiaries. The family default due to poverty.

•The build up programme was made possible by:

- 1.Duduza Care
- 2.Ladysmith LGBT
- 3.HST – Health System Trust

MONTH	ACTIVITY	VENUE	RESPONSIBLE	INDICATORS
07/11/14	HCT (Treatment Expansion and Testing)	Lister Clearance- Windsor Park	DOH, WAC, LAC Coordinator and Roving Team	Number of people knowing their status and tested- 20 people
14/11/14	HCT (Treatment Expansion and Testing)	Illing Road Taxi Rank	DOH, WAC, LAC Coordinator and Roving Team	Number of people knowing their status and tested – 96 people
21/11/14	HCT (Treatment Expansion and Testing)	Spot On Parking	DOH, WAC, LAC Coordinator and Roving Team	Number of people knowing their status and tested- 24 people
28/11/14	Major Event- HCT (Treatment Expansion and Testing)	Macksons Taxi Rank	DOH, WAC, LAC Coordinator and Roving Team	Number of people knowing their status and tested- 36 people
06/12/14	Cancer Awareness Walk	Ward 2- Ezakheni FET	Ward 2 Community	30 people attended

# HCT



# WORLD AIDS DAY

